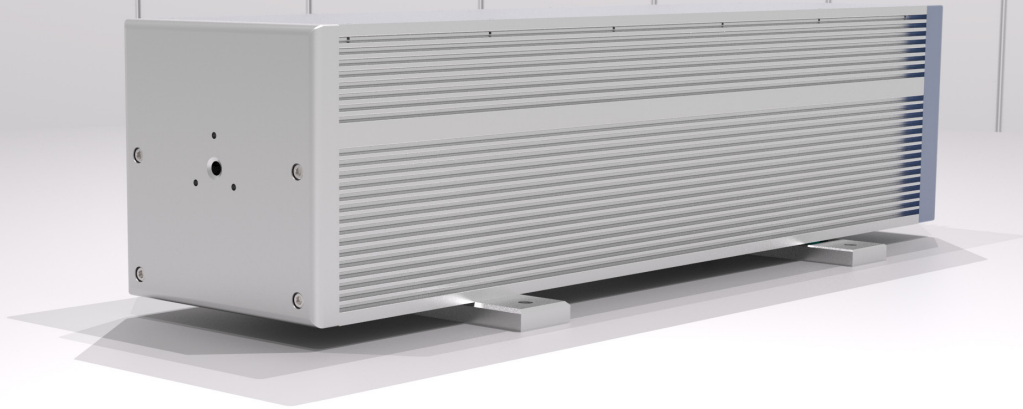


DL-500



Laser Power

Wavelength	9.3 μm
Average Power	1-5 W
Peak Power	500 W
Power Stability	$\pm 10\%$

Pulse Width Modulation Parameters

Duty Cycle	0-1.5 %
Pulse Repetition Frequency	0-500 Hz

Dimensions & Weight

Laser Weight	35.5 lbs
Dimensions L x W x H	23.2 x 5.5 x 5.5 Inch

Beam Characteristics

Beam Waist Diameter	2.2mm
Waist Location	Output Coupler
Mode Quality	$M^2 \leq 1.1$
Full Divergence Angle	6.2 mrad
Rise Time	10 μs
Fall Time	15 μs
Polarization	Random

DC Power Requirements

RF Driver	48 V
-----------	------

Heat & Cooling

Heat Dissipation	$\leq 500\text{W}$
Cooling Requirement	Air Cooled
Working Temperature	5°C to 40°C

Notes

Power Stability calculated in CW at thermal equilibrium

$$+ \frac{P_{max} - P_{min}}{P_{max} + P_{min}}$$

Beam specifications measured at: $\frac{1}{e^2}$

All measurements taken at the strongest line. All specifications are subject to change without notice.



ACCESS LASER
Member of the TRUMPF Group

