

AOFemto Jericho Series

Industrial UV femtosecond laser

- < Output power up to 30 W
- < Beam roundness up to 95%
- < Automatic crystal indexing and output power display
- < Real-time laser status monitoring and intelligent diagnosis
- < Excellent beam quality ($M^2 < 1.2$)
- < Both edge trigger and level trigger are available, the profile of the burst can be edited

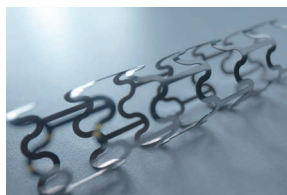


► Features & Benefits:

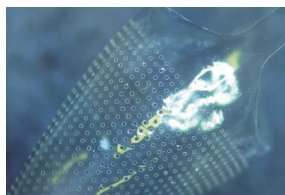
The AOFemto Jericho femtosecond UV lasers feature a world-leading third-harmonic generation technology, a fully automatic crystal indexing technology, and a beam shaping technology. These advanced technologies ensure excellent beam quality, an extended crystal lifetime, and improved laser stability.

AOFemto Jericho femtosecond UV lasers feature excellent beam quality ($M^2 < 1.2$), and small astigmatism with beam roundness is up to 95%. The pulse stability and power stability of the laser are excellent. The lasers can be controlled via external trigger signals. Both high/low level trigger and rising/falling edge trigger are available. The rising/falling edge trigger mode enables Pulse-on-demand (POD) functionality. In addition, the output power of the laser can be controlled through external analog voltage signal.

The lasers also have the functions of automatic crystal indexing function, power display, laser status real-time monitoring, and intelligent diagnostics. Through the use of various internal sensors, the laser status is completely monitored, which enables remote troubleshooting and recovery. The user experience is greatly improved.



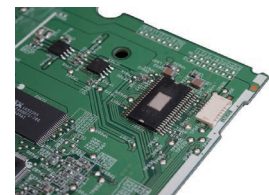
Medical device manufacturing



Balloon hole drilling



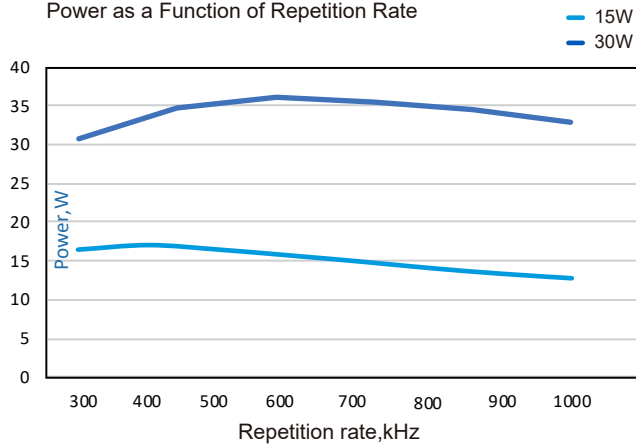
High-accuracy/High-speed/
Micro-machining



Semiconductor/Solar processing/
Wafer scribing

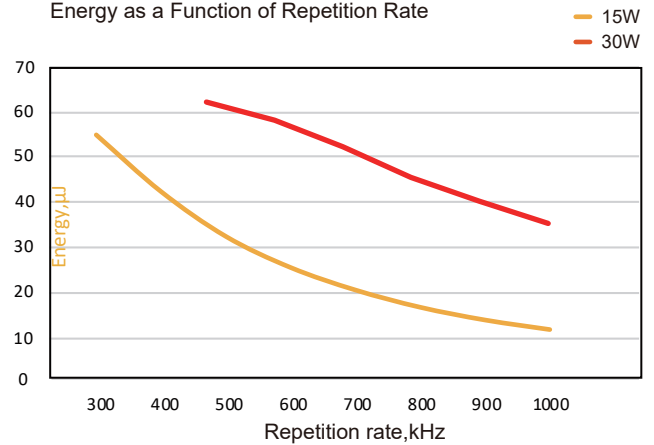
Typical Performance AOFEMTO-343-15W/30W

Power as a Function of Repetition Rate



Typical Performance AOFEMTO-343-15W/30W

Energy as a Function of Repetition Rate



AOFEMTO 343			
Specification	5W-100K	15W-500K	30W-1000K
Wavelength (nm)	343		
Average Power (Watts)	> 5W@100KHz	> 15W@500KHz	> 30W@1000KHz
Energy (µJ)	> 50	> 30	> 30
Specified Repetition Rate(kHz)	100	500	1000
Repetition Rate (kHz)	50-300	300-1000	300-2500
Pulse Width (fs)	< 800		
Beam Quality (M ²)	< 1.2		
Beam Roundness (%)	> 90		
Beam Diameter (mm)	< 3.5mm		
Beam Divergence (mRad)	< 2		
Point Stability (µrad/°C)	< 30	< 50	< 50
Polarization Ratio	100:1 Linear,Horizontal		
Pulse-to-Pulse Stability (% RMS)	< 2		
Average Power Stability(% over12 hours)	< 3		
Cold Start Warm-Up (mins.)	< 45		
Standby Warm-Up (mins.)	< 15		
Storage Temperature Range (°C)	15 to 35		
Storage Humidity Range (%)	20 to 80,Non-condensing		
Input Voltage (VDC)/Rated Power(W)	24 / 1000		
Communication	RS232		
Cooling	Water		

AOFemto Jericho SERIES

AOFEMTO Laser CAD Drawing

