

# AONano Compact Series

## Industrial Green nanosecond laser

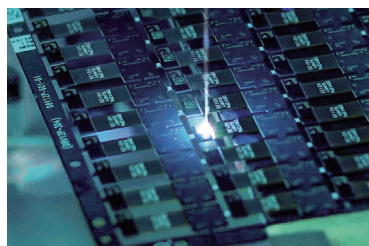
- < Meet the requirements of 7x24 continuous operation of industrial production
- < Output power of 10W+
- < Excellent beam quality  $M^2 < 1.2$
- < RS232 serial communication



### ► Features & Benefits:

Both air-cooled version and water-cooled version are available for this laser model. The compact size saves space for installation on the customer side, lowers the integration cost and simplifies the installation process.

Both 5W version and 10W version are available. The typical repetition frequency is 30kHz to 150kHz. The pulse energy is up to 100 $\mu$ J. The short pulse width (<15ns @ 50k), the excellent beam quality ( $M^2 < 1.2$ ), and the great beam roundness (> 90%) enable this laser model a perfect candidate for various application areas, including PCB marking, glass marking, glass engraving, and so on.



PCB marking



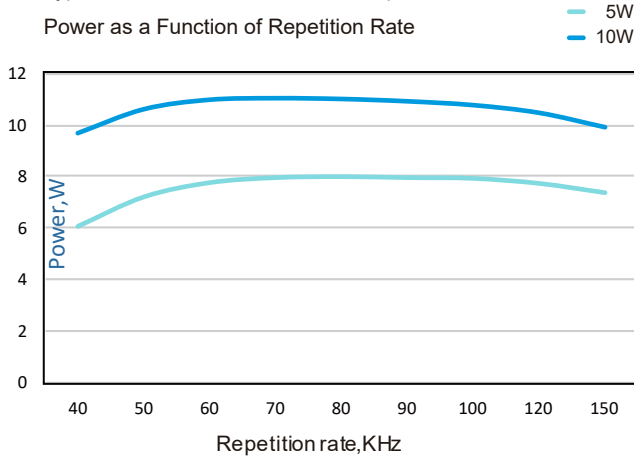
Glass marking



Glass engraving

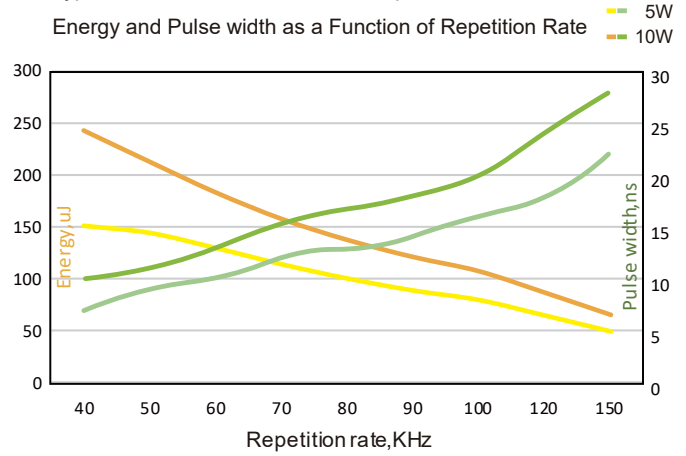
Typical Performance AONano Compact-532-5W/10W-50K

Power as a Function of Repetition Rate



Typical Performance AONano Compact-532-5W/10W-50K

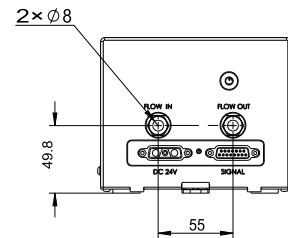
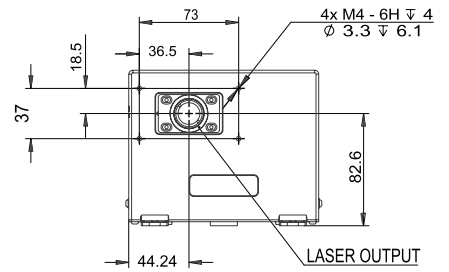
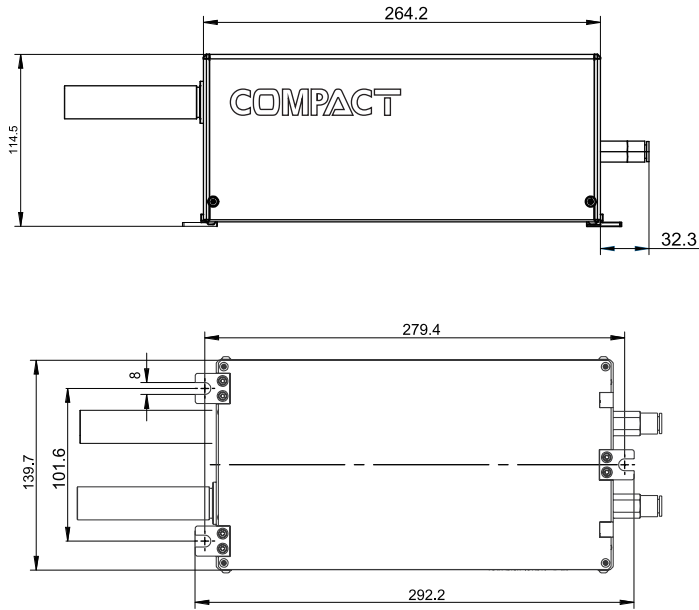
Energy and Pulse width as a Function of Repetition Rate



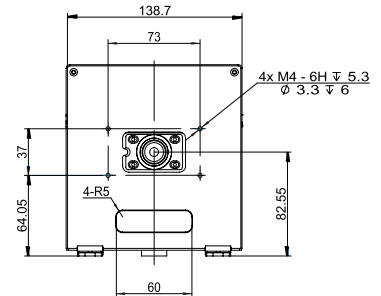
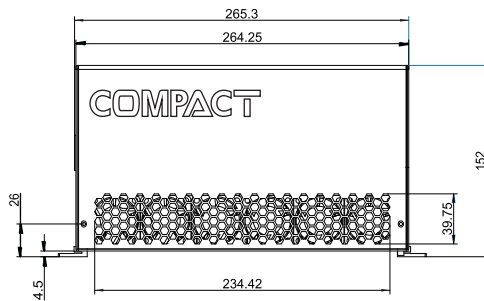
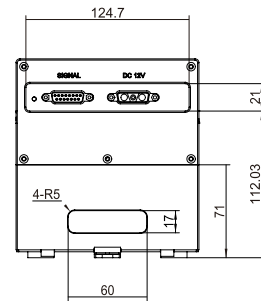
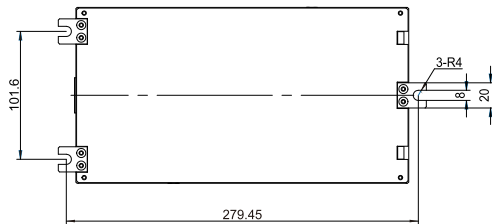
### AONano Compact 532

Specification	5W-50K	10W-50K
Wavelength (nm)	532	
Average Power (Watts)	5	10
Energy (µJ)	>100	>200
Specified Repetition Rate(kHz)	50	
Repetition Rate (kHz)	30 ~ 150	
Pulse Width (ns)	<15	
Beam Quality (M <sup>2</sup> )	< 1.2	
Beam Roundness (%)	> 90	
Beam Diameter (mm)	~0.5	
Beam Divergence (mRad)	< 1.5	
Point Stability (µrad/°C)	< 20	
Polarization Ratio	100:1 Linear, Horizontal	
Pulse-to-Pulse Stability (% RMS)	< 3	
Average Power Stability(% over12 hours)	< 3	
Cold Start Warm-Up (mins.)	< 40	
Standby Warm-Up (mins.)	< 10	
Operational Temperature Range (°C)	15-30°C	
Operation Humidity Range (%)	20 to 80, non-condensing	
Storage Temperature Range (°C)	- 20 to 50	
Storage Humidity Range (%)	20 to 80, non-condensing	
Input Voltage (VDC)/Rated Power(W)	24/350	
Power Consumption(W)	< 110	< 130
Communication	RS232	
Cooling	Air/Water	
Laser head (kg)	5	

# AONano Compact SERIES



AONano Compact-532 (water cooling) Laser CAD Drawing



AONano Compact-532 (air cooling) Laser CAD Drawing