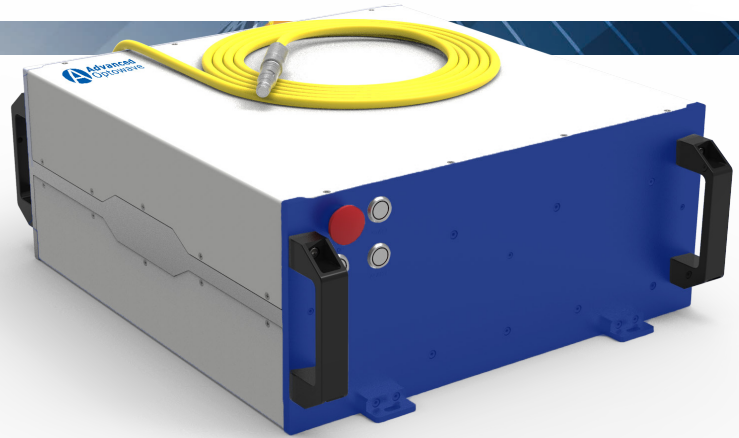


QCW Fiber Laser

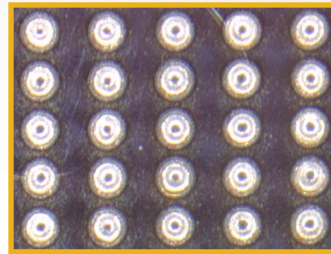
- < Pulse Energy Up To 7.5~60J
- < Average Power From 75~600W
- < Peak Power 750~6000W
- < Single-mode/Multi-mode Optional



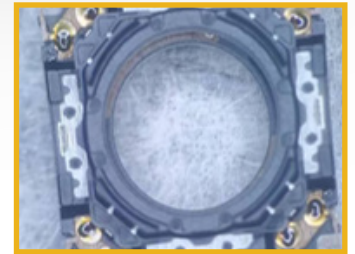
Needle Welding



Silicon Wafer Cutting



Spot Welding



VCM Welding

SPECIFICATIONS		75		150		300		450		600	
Wavelength (nm)		1060~1090									
Working Mode		Pulse/Continuous									
Average Power (W)	Pulse	75		150		300		450		600	
	Continuous	100		300							
Max. Peak Power (W)		750		1500		3000		4500		6000	
Max. Pulse Energy (J)		7.5		15		30		45		60	
Pulse Width (FWHM)		0.02~50									
Modulation Frequency (Hz)		1~20000					1~5000				
Core Diameter (μm)		14	14	50	100	25	50	100	30	50	50
Beam Quality M ²		<1.25		<6	<13	<1.4	<6	<13	<1.6	<6	<6
QBH Divergence Angle (mrad)		<120	<120	<180		<80	<180		<80	<180	<180
Laser Dimension (mm)		431*439*164		555*433*164		689*495*164		508*481*266		1070*750*960	
Net Weight (kg)		<35		<50		<54		<65		<145	
Supply Voltage (V)		48(DC)				220(AC)					
Power Consumption (W)		<400		<1000		<1200		<2000		<2500	
Cooling Method		Air									